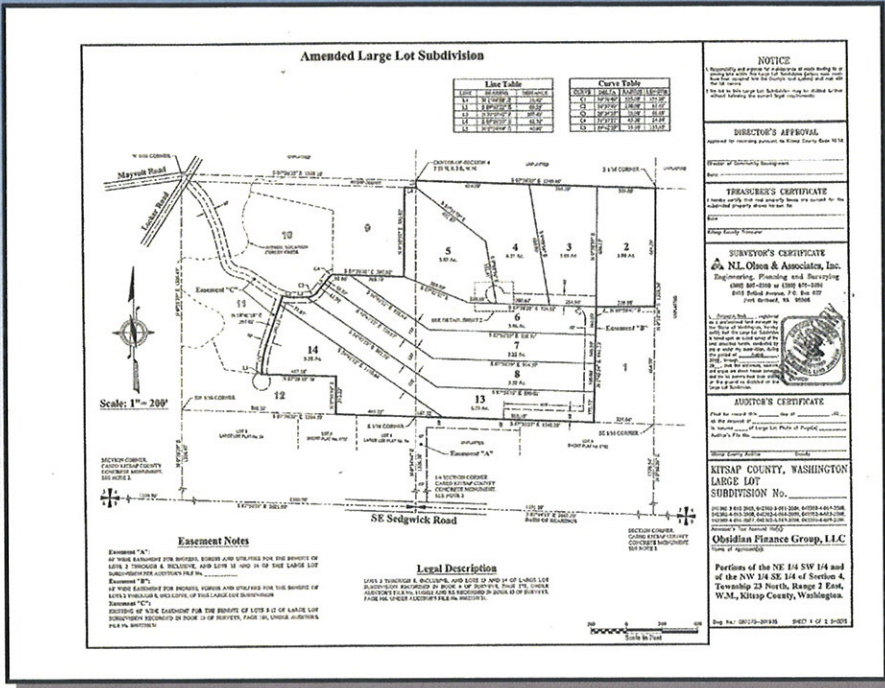


13 5-Acre Parcels in Park-Like Setting!

\$1,170,000

**XXXX SEDGWICK PLATS
PORT ORCHARD, WA**

MLS # 29085816



- ∞ Gorgeous, Park Like Setting
- ∞ Bordered on One Side by Salmon-Bearing Curley Creek
- ∞ Rises to a Large Upland Plateau with Territorial Views
- ∞ 5 Minutes to Southworth Ferry
- ∞ Mature Timber
- ∞ Build a Secluded Estate & Sell Remaining Parcels Now or in the Future

OR

Terrific Opportunity for a Builder/Developer to Create a Great Residential Neighborhood!

Find This HOME on www.JohnLScott.com/80523



For more information contact:
Terry Taylor
Real Estate Professional
 Call: (360) 731-3369
 Direct: (360) 895-5350
terrytaylor@johnlscott.com
www.johnlscott.com/terrytaylor



The plat map depicted is a proposed amendment and is not the current lot design. The original lot design is available upon request.

John L. Scott
 REAL ESTATE
 1954 SE Lund Ave
 Port Orchard, WA 98366
 360-876-7600