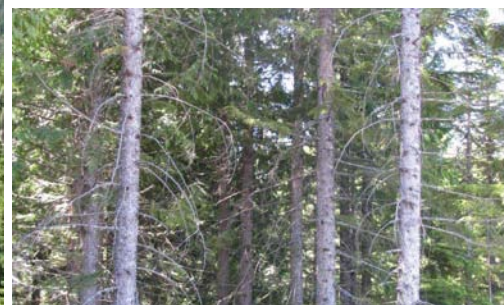
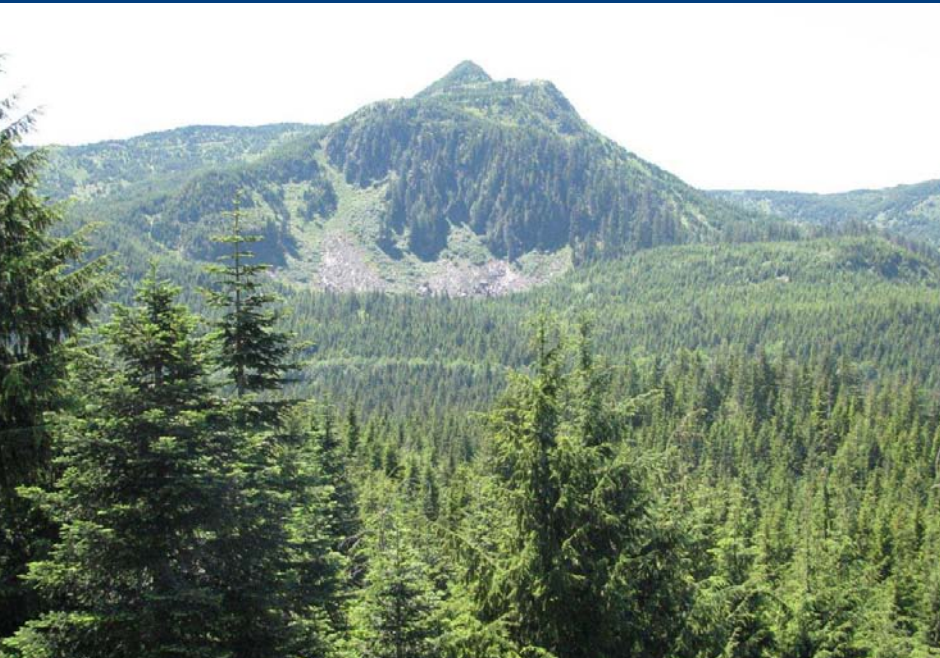


Potts Road Tree Farm

XXX Potts Road, Sedro Woolley, WA

FOR SALE



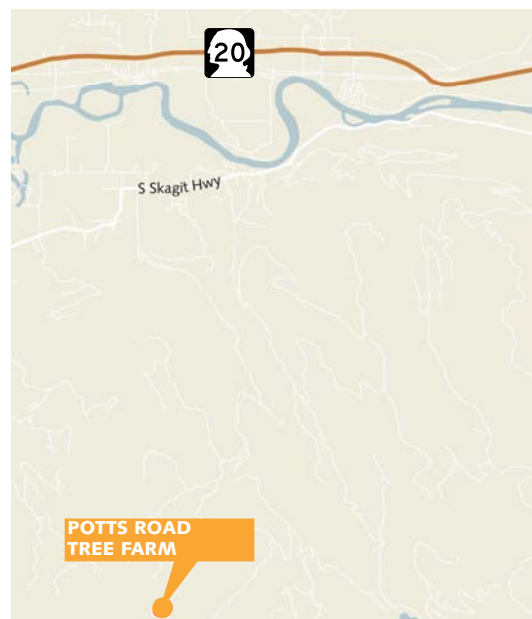
Features

THE PROPERTY

- Well stocked Hemlock, Pacific Silver fir and Western Red Cedar tree farm ranging in age from 42-110 years
- Seller's inventory estimate is 650 MBF
- Access is via easement with adjacent land owners
- Abundant wildlife
- Size: 160 acres
- Price: \$179,000

LOCATION/DIRECTIONS

- From Sedro Woolley travel south on State Highway 9
- Cross the Skagit River Bridge and turn right onto South Skagit Highway for 10.5 miles to Potts Road
- Turn right on Potts Road and continue approximately 10 miles to property



Contact

Paul Bialkowsky

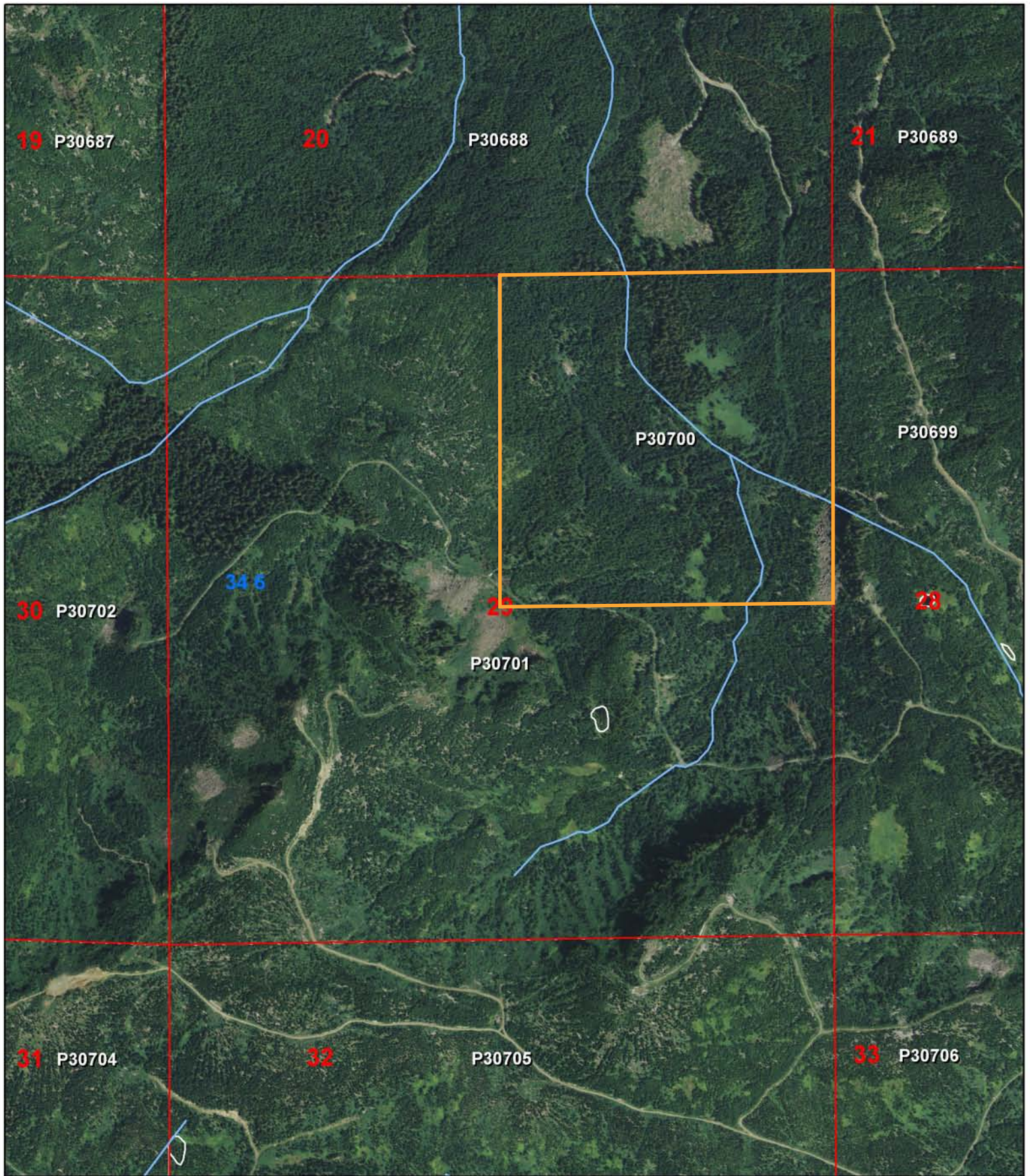
360.791.0138

paulb@gvakm.com

www.forestland.gvakm.com

This information supplied herein is from sources we deem reliable. It is provided without any representation, warranty or guarantee, expressed or implied as to its accuracy. Prospective Buyer or Tenant should conduct an independent investigation and verification of all matters deemed to be material, including, but not limited to, statements of income and expenses. Consult your attorney, accountant, or other professional advisor.

GVA Kidder Mathews
Worldwide Real Estate Solutions



T34N/R6E/S29 - P30700

Skagit County

Legend

- Sections
- County
- Townships



This information supplied herein is from sources we deem reliable. It is provided without any representation, warranty or guarantee, expressed or implied as to its accuracy. Prospective Buyer or Tenant should conduct an independent investigation and verification of all matters deemed to be material, including, but not limited to, statements of income and expenses. Consult your attorney, accountant, or other professional advisor.

