

Bedal 37

XXX Mountain Loop Highway, Darrington, WA

FOR SALE



Features

THE PROPERTY

- 37 Acres of mixed hardwoods, mainly Alder with some scattered Douglas-fir and Hemlock
- Over 450 MBF of merchantable timber per seller's estimate
- Largest parcel in a subdivision of summer cabins and recreation properties
- Deeded access across neighboring parcels
- Parcel: 621000001800
- Price: \$39,900

LOCATION/DIRECTIONS

- From Darrington proceed south on Mountain Loop Highway 16.5 miles
- Cross the North Fork Sauk River Bridge and take the first right through gate across the South Fork Sauk River and continue 0.25 miles to first left to property



Contact

Paul Bialkowski

360.791.0138

paulb@gvakm.com

www.forestland.gvakm.com

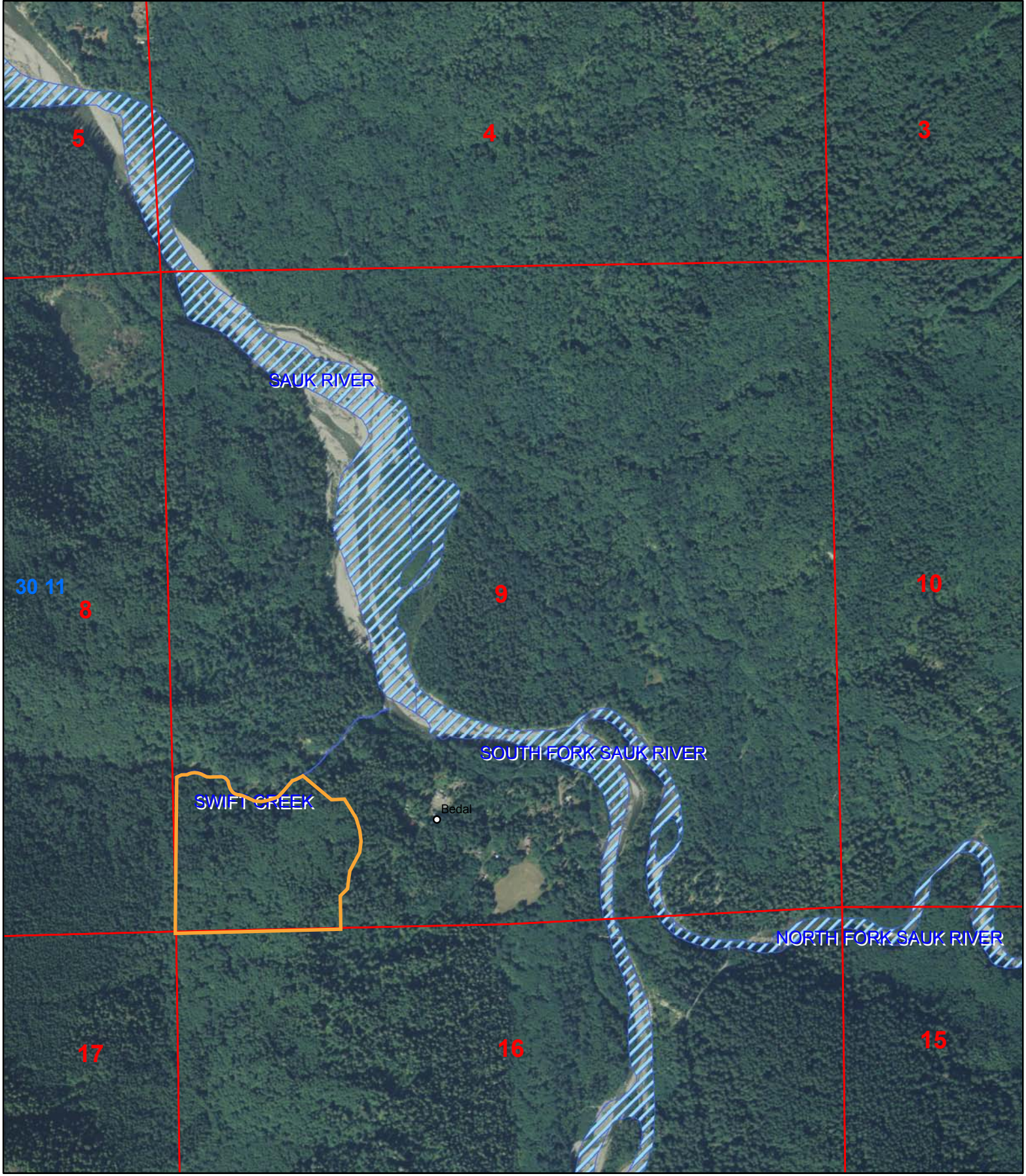


Photo Date: 2009

Legend

- Sections
- Townships
- County

T30N/R11E/S9

Snohomish County - Parcel #0062100001800



This information supplied herein is from sources we deem reliable. It is provided without any representation, warranty or guarantee, expressed or implied as to its accuracy. Prospective Buyer or Tenant should conduct an independent investigation and verification of all matters deemed to be material, including, but not limited to, statements of income and expenses. Consult your attorney, accountant, or other professional advisor.